

# Geospatial Trends You May Have Missed

Adena Schutzberg, Nov 16, 2009  
New England URISA



# Three Categories

- Data and User Interfaces
- Desktop GIS and the Marketplace
- “GIS”



# A Brief Advertisement

- Dec 2, 7 pm, Kendall Square, Cambridge
- Free
- Fast moving five minute presentations
- Lots of great geofolks!
- Presenters wanted





# Three Categories

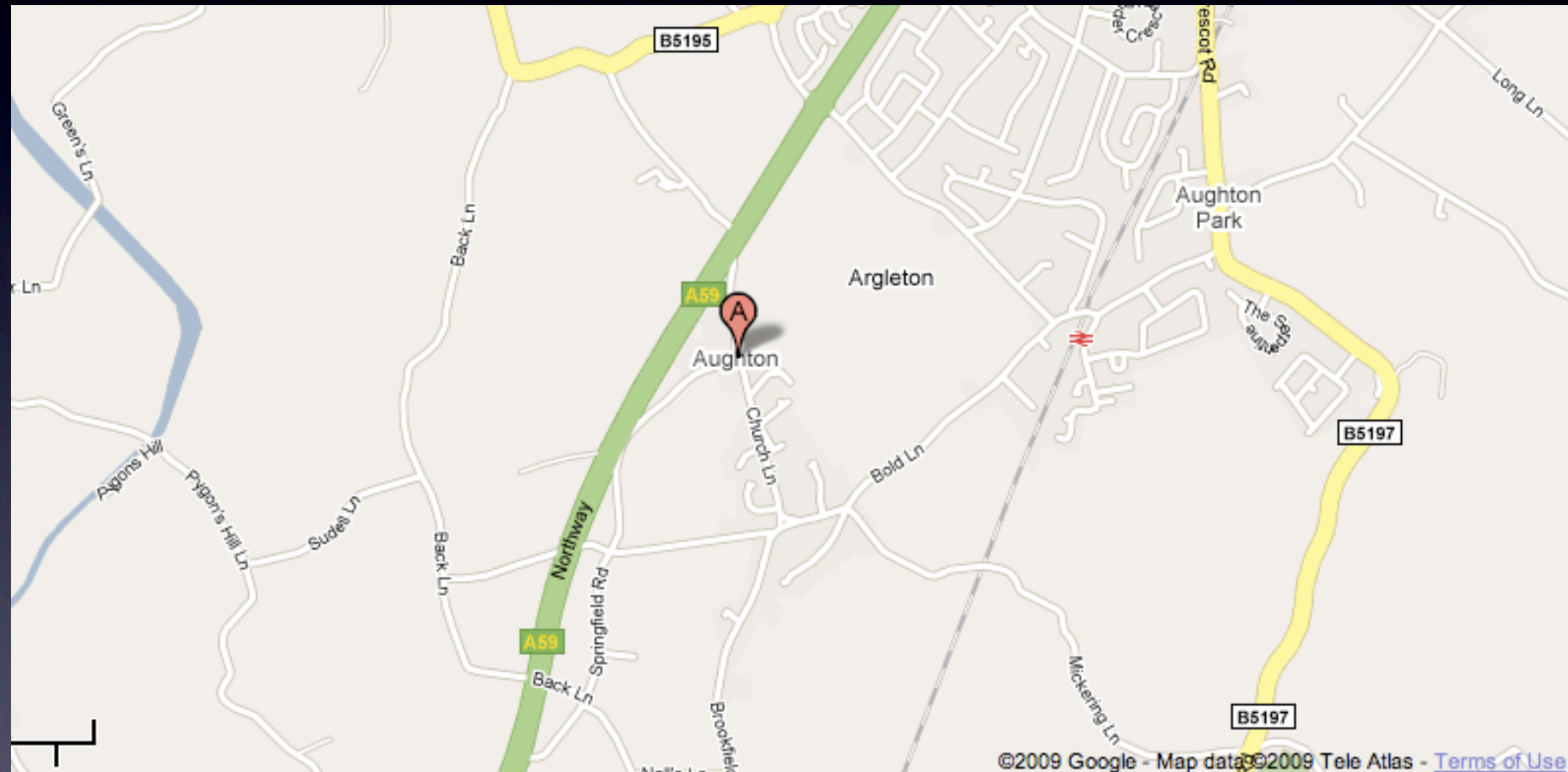
- Data and User Interfaces
- Desktop GIS and the Marketplace
- “GIS”



# Consumers and Data Quality



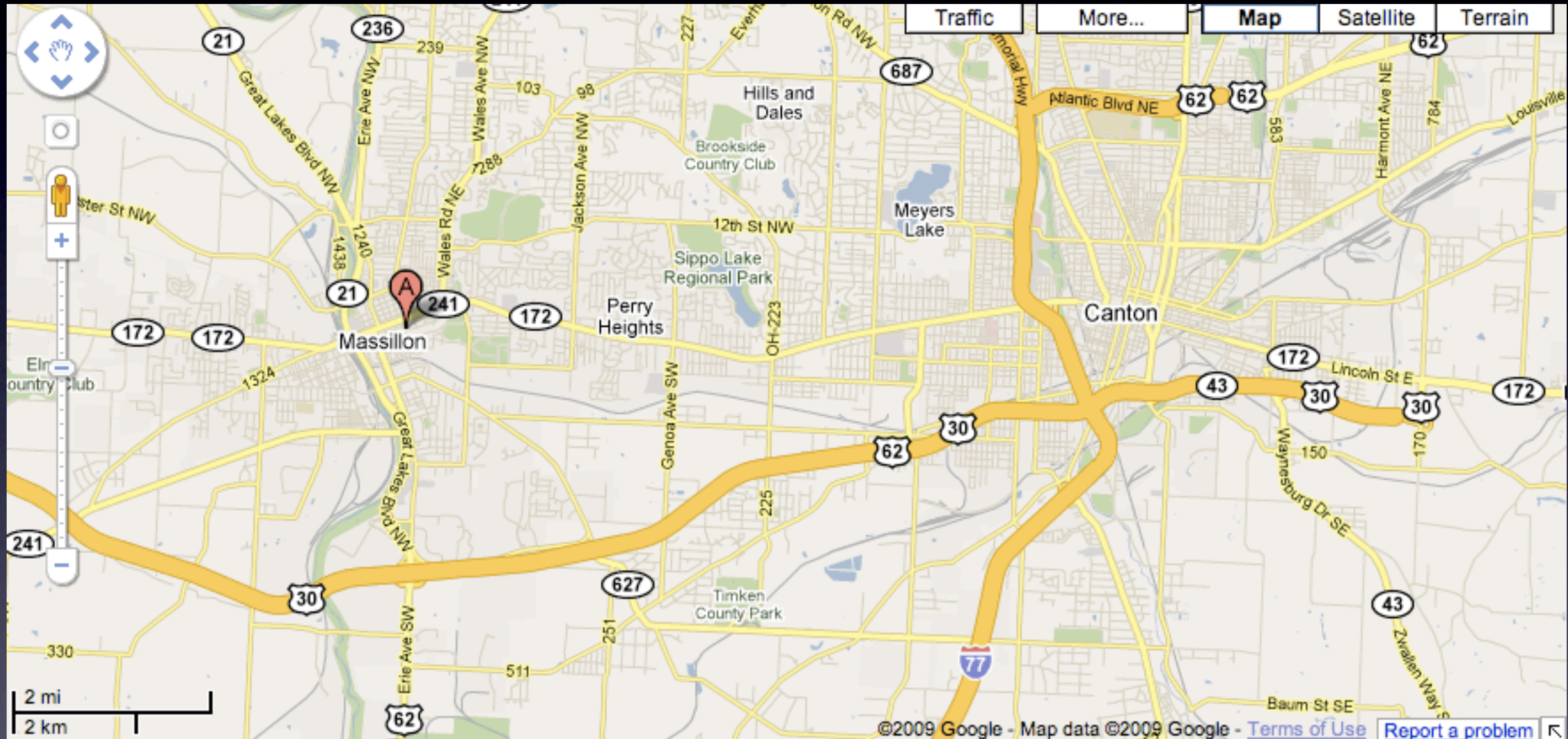
# Since the Switch



“Aughton”



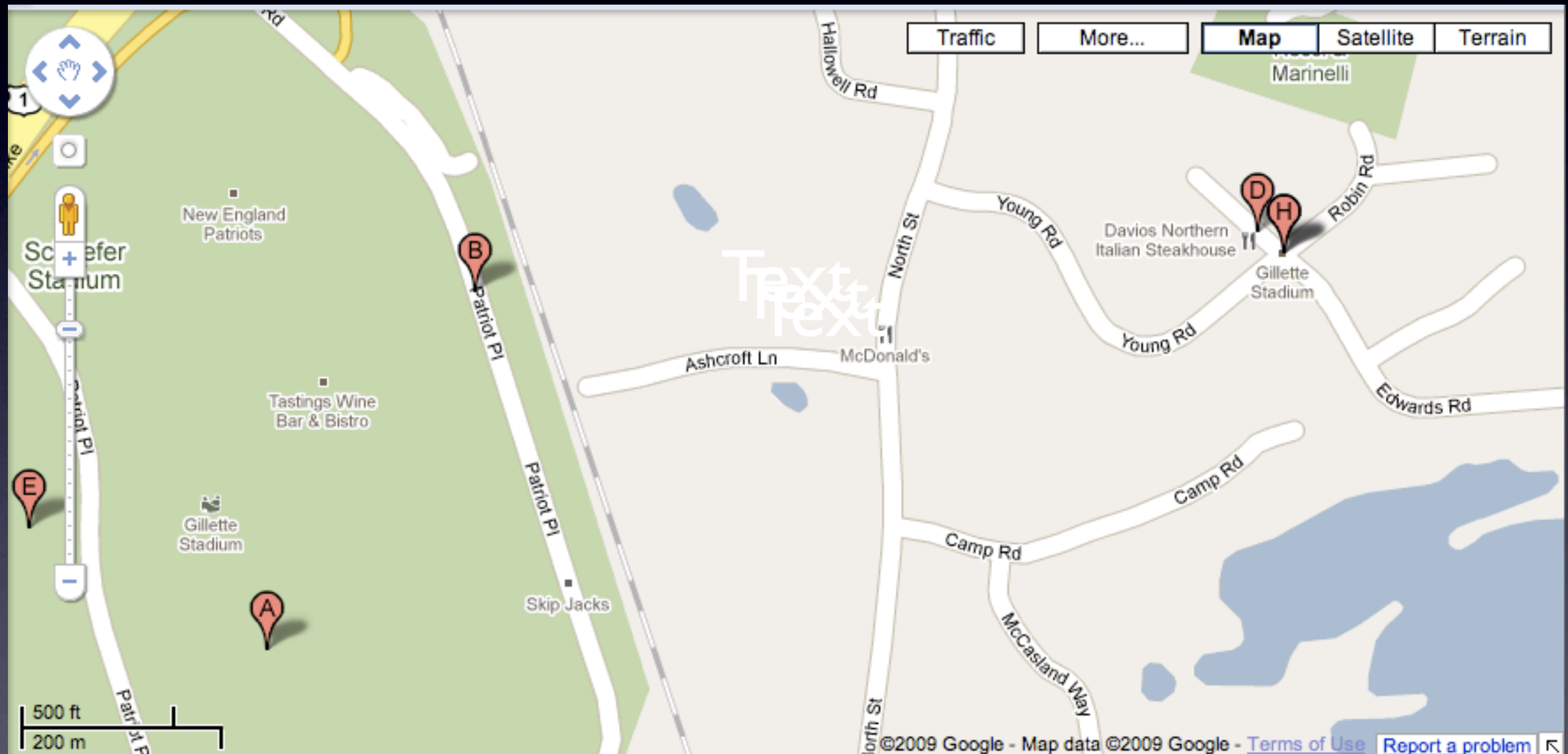
# Since the Switch



“Canton, Ohio” (now fixed)



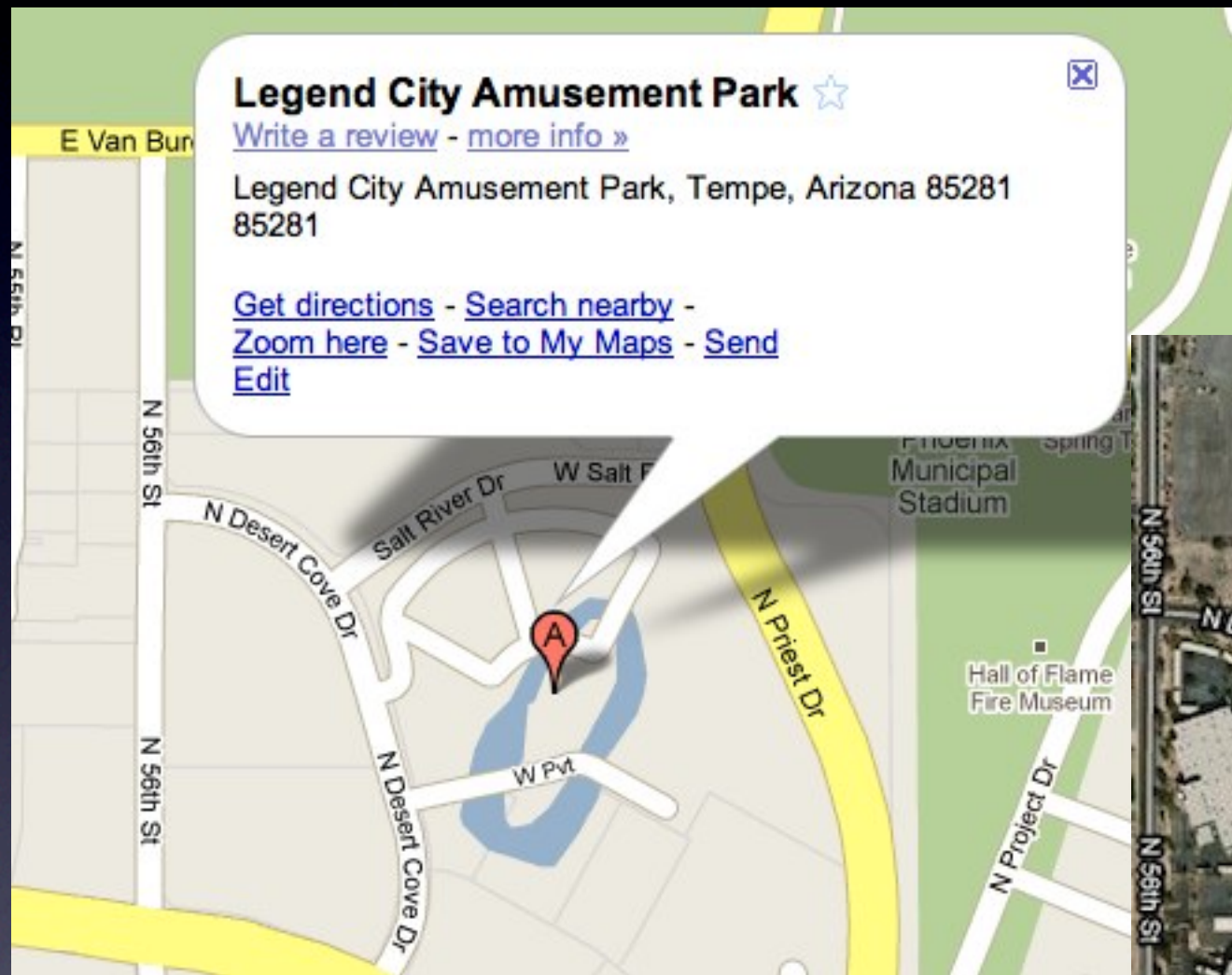
# Since the Switch



“Patriot Place” (now fixed)



# Since the Switch



Still a POI, now noted “closed”



# Since the Switch

“I think Goog made the switch to their own data too soon. My wife has used Google religiously for getting driving directions for a couple of years now and always been happy with it. In the past week it has gotten her lost 4 times – she has now switched to MapQuest or Bing.” [San Jose, CA]

– Steven Citron-Pousty, Steve's Little World,  
<http://thesteve0.wordpress.com/2009/11/03/did-they-drop-teleatlas-too-early/>



# Since the Switch

“...the driving directions are, for the most part, just fine. Re-routing is fast when you make an unscheduled turn, and the Droid phone appears to track the road as well or better than an iPhone. I have heard others talk of reliability issues, but frankly, that kind of evaluation takes weeks or months, and results can differ from location to location.”

– Wilson Rothman, Gizmodo, <http://gizmodo.com/5393935/google-navigator-for-android-review-good-for-free-but-far-from-perfect>



# Since the Switch

“And occasionally, the directions were plain wrong. But such things happen with the best GPS systems, and Google’s a company full of fast learners.”

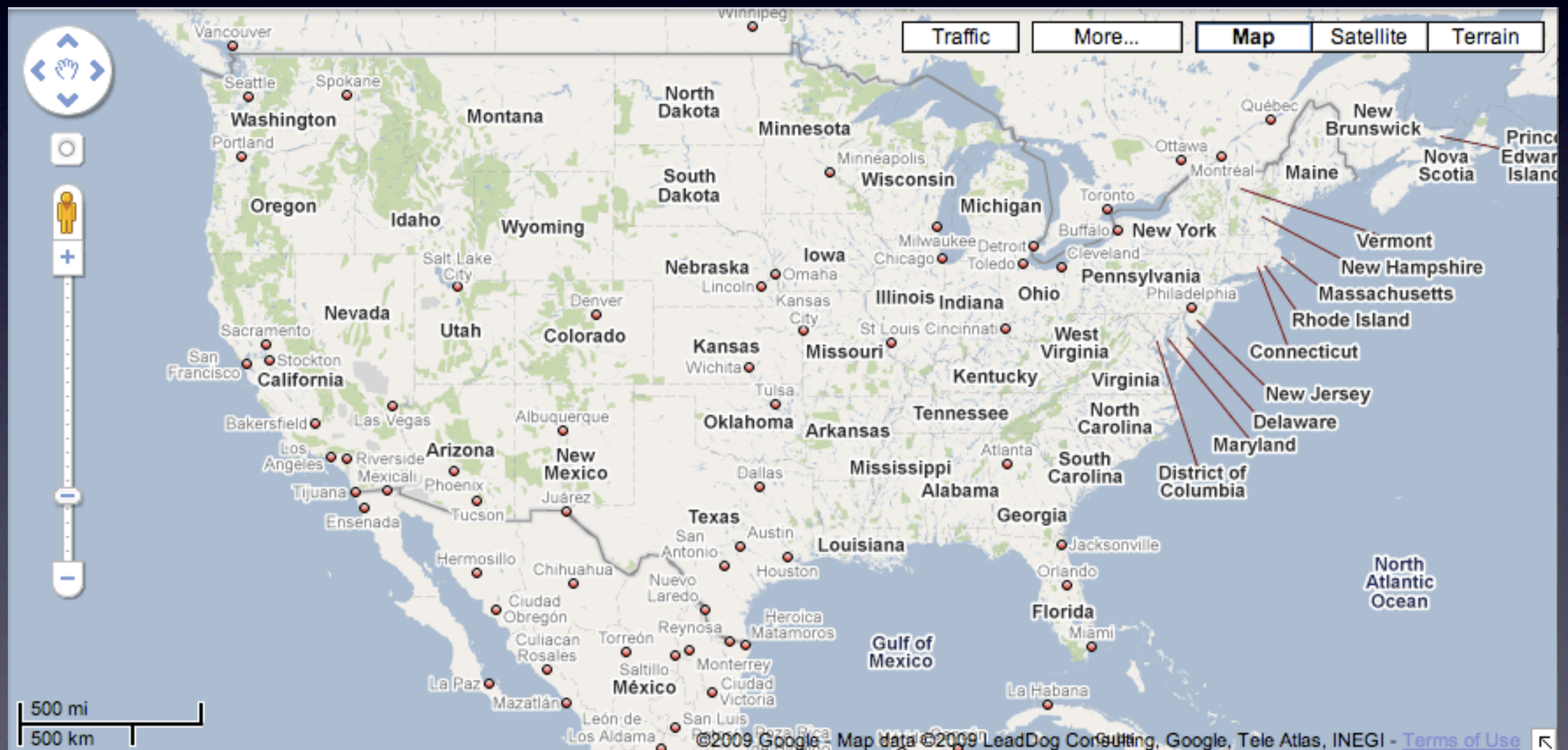
– Hiawatha Bray, Boston Globe, [http://www.boston.com/business/technology/articles/2009/11/05/google\\_touches\\_add\\_value\\_to\\_droid/?page=2](http://www.boston.com/business/technology/articles/2009/11/05/google_touches_add_value_to_droid/?page=2)



# User Interface Complexity Creep

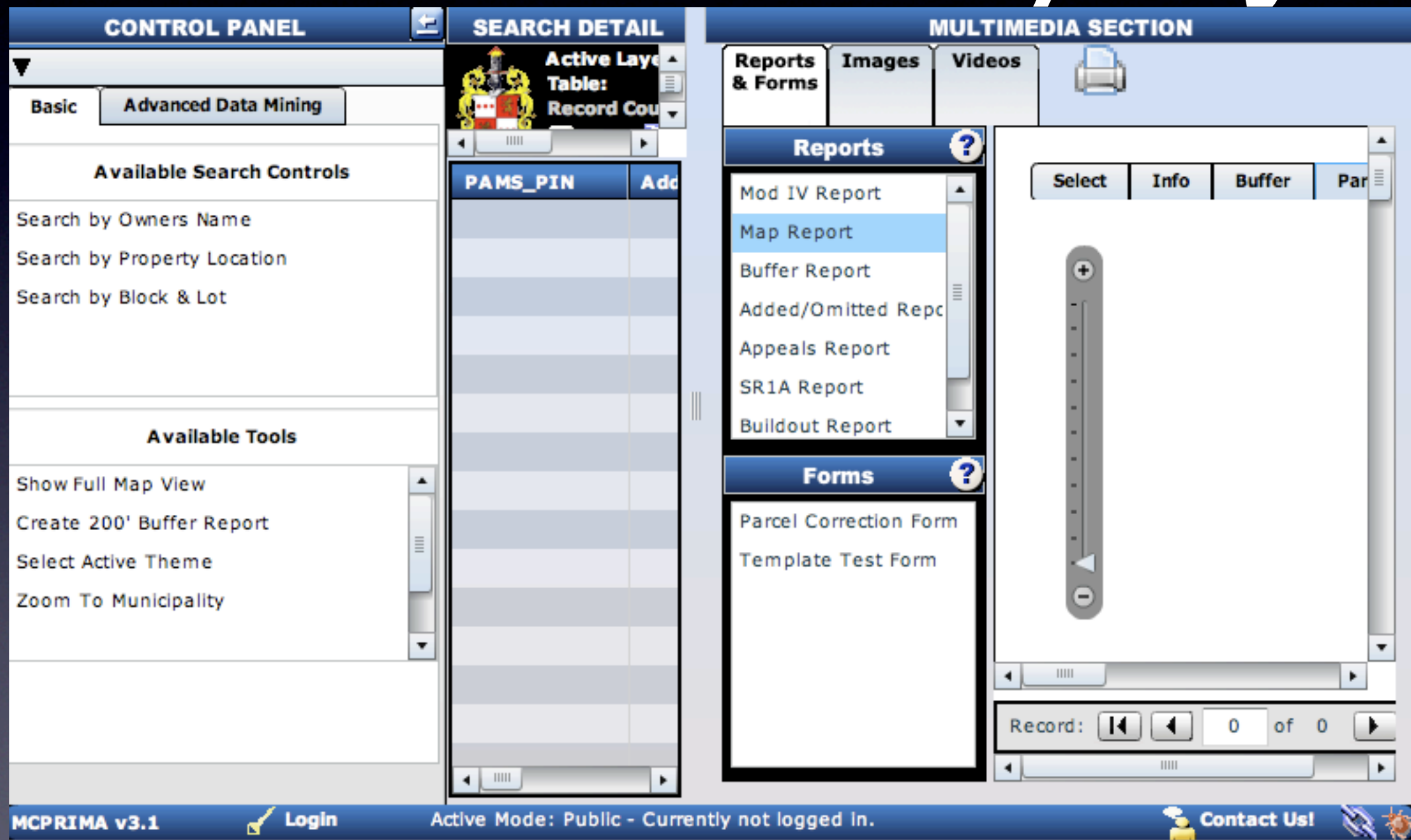


# “[Google Maps] ease of use has been sacrificed”





# Flex/ArcGIS Server, Morris County, NJ



<https://morrisgis.co.morris.nj.us/MCPRIMA-war/MorrisCounty?>

[http://www.directionsmag.com/article.php?article\\_id=3218](http://www.directionsmag.com/article.php?article_id=3218) (Brian Noyle)



# The National Map 2.0 - Viewer BETA



Find a Place (e.g. an Address, City, or Place) [Options](#) [Help](#)

[Search](#) [Link](#)

e.g., Phoenix, AZ or -115.14 36.17

Base Map **Topo/Shaded** Scanned Maps (Beta)

Active Tool: Map Navigation

[Standard](#) [Advanced](#) [Annotation](#) [USGS](#)

Cursor Position 22.01045° -71.31517° Scale 1:36,978,595 Mexico

Beta URL not ready for wide-distribution until stability testing is completed prior to the end of the calendar year.

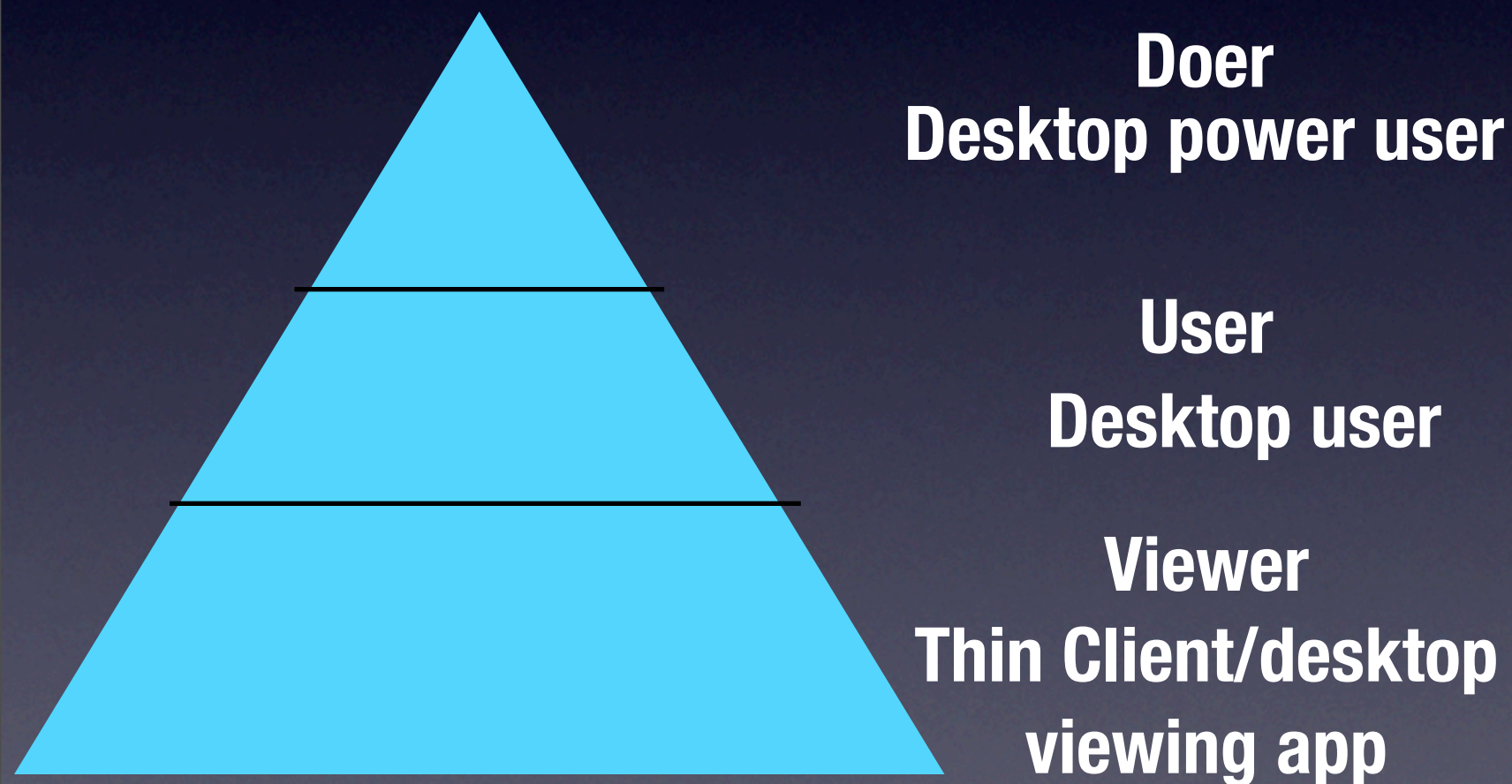


# Three Categories

- Data and User Interfaces
- Desktop GIS and the Marketplace
- “GIS”

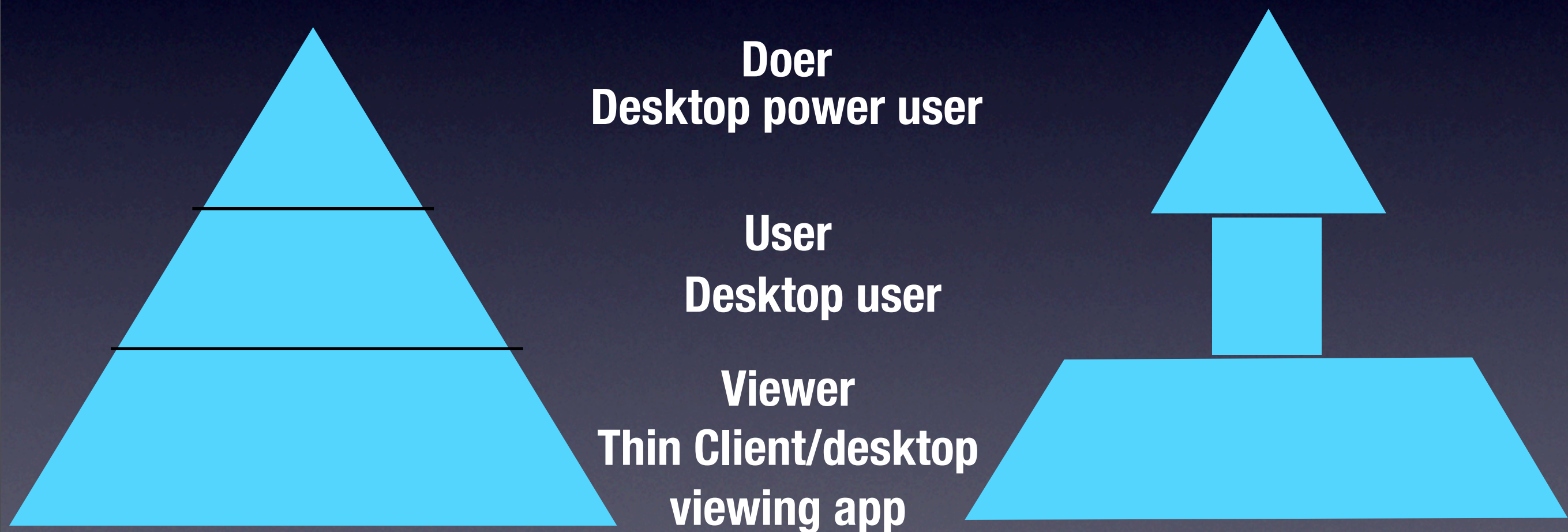


# Desktop GIS' Changing Role





# Desktop GIS' Changing Role





# The World Around Desktop GIS

- Cloud computing
- Netbooks
- Wireless ubiquity
- Flash/Flex/Java/Air and other RIAs
- Chrome OS
- BA Online





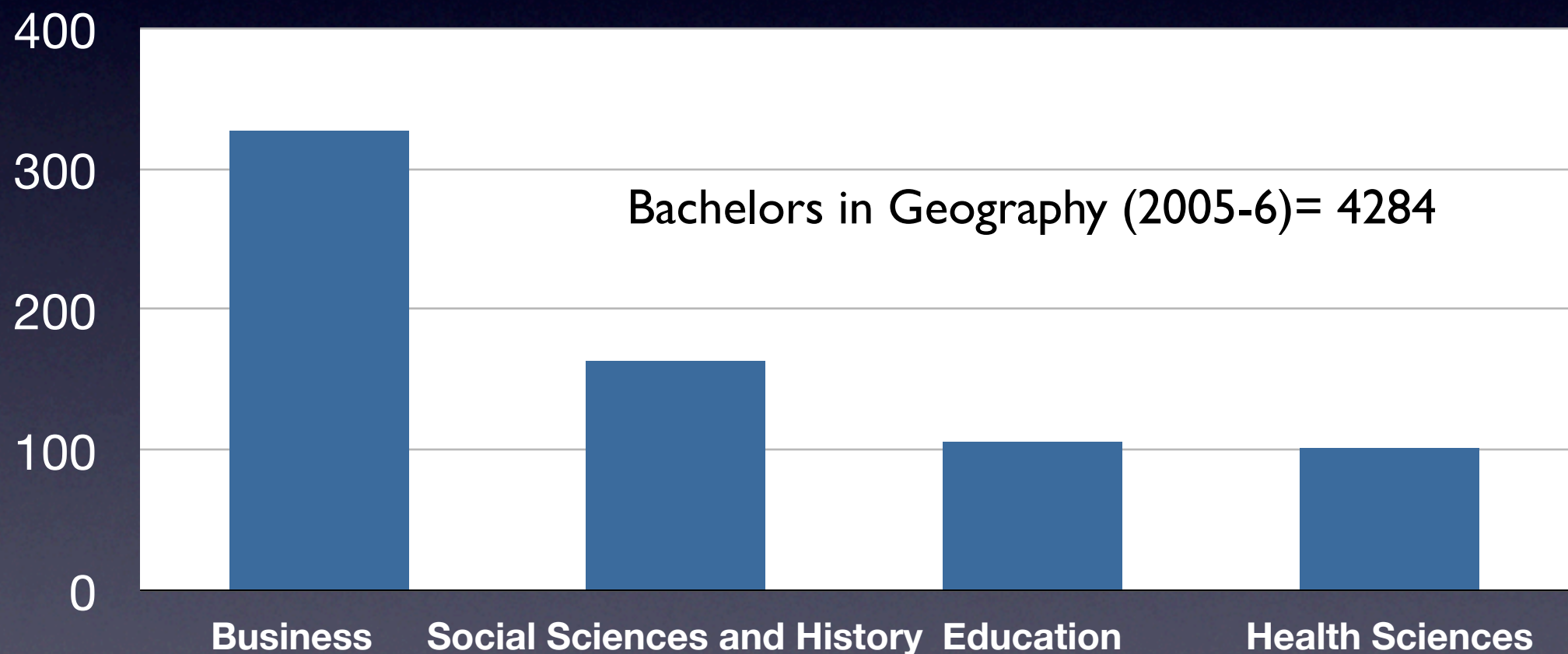
# GIS Driver's License

- ...I would argue that the motivation for studying an MSc in GIS over the past 20 years was to get the 'ARC/INFO driving licence'.
- ...the universities were telling themselves that they were teaching the principles of GIScience but the students were mostly interested in learning how to operate a GIS at a proficient level to get a job.
- So in an era in which you don't need a licence to join the party, what is the MSc in GIS for?



# Teaching GIS vs. Teaching with GIS

## Bachelors Degrees in '000s (US, 2006-2007)



U.S. Department of Education, National Center for Education Statistics. (2009). Digest of Education Statistics, 2008 (NCES 2009-020), Chapter 3.

<http://nces.ed.gov/FastFacts/display.asp?id=37>

<http://www.aag.org/aagdata/third-parties.htm>



# Three Categories

- Data and User Interfaces
- Desktop GIS and the Marketplace
- “GIS”



# Anecdotal

- GIS
- Geospatial
- Current use of “GIS”



# Who is #1 in GIS?

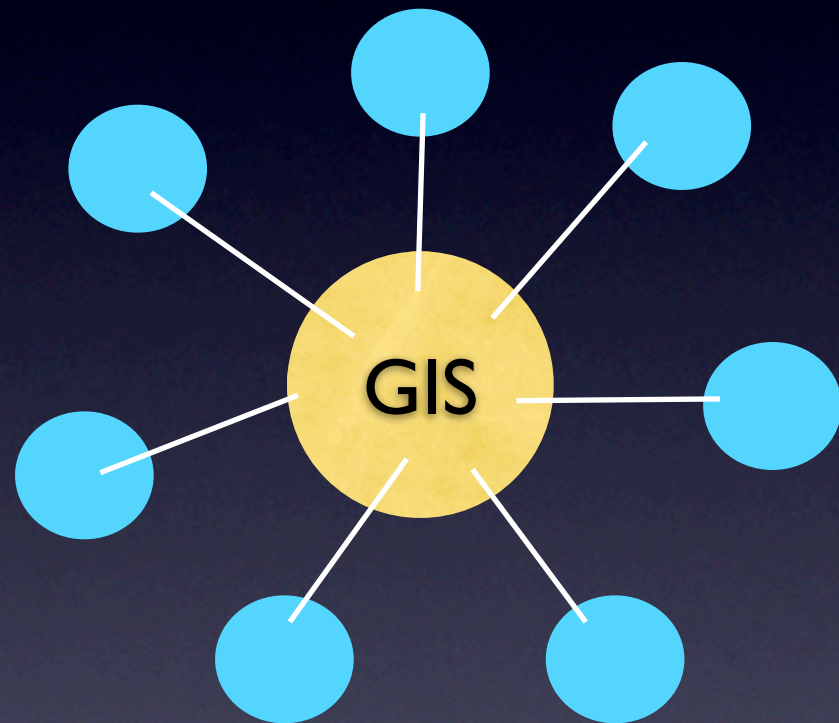


# Who is #1 in GIS?



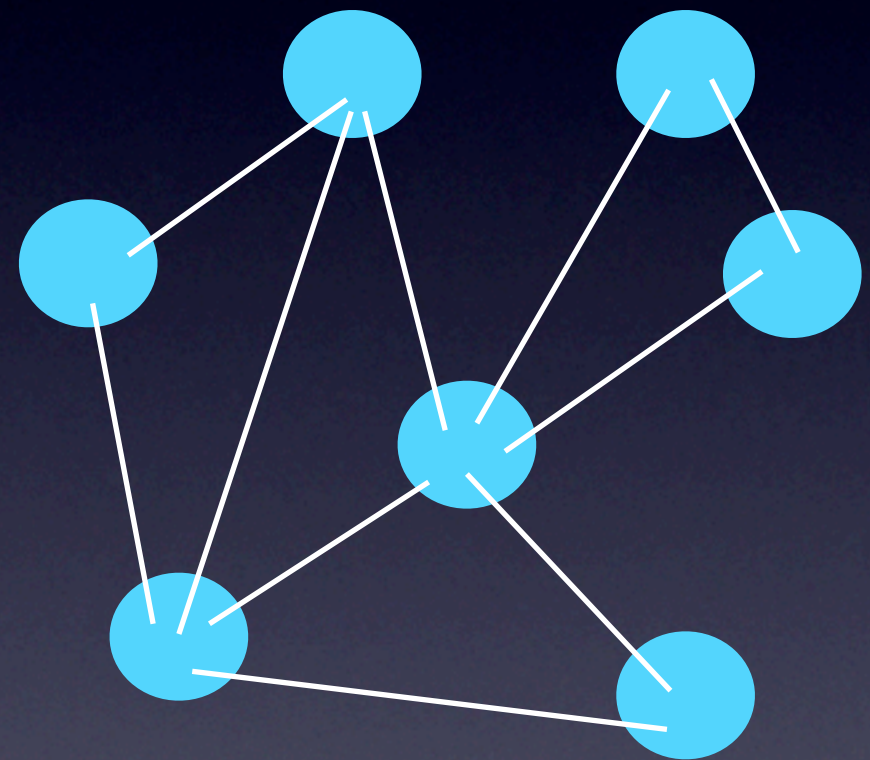
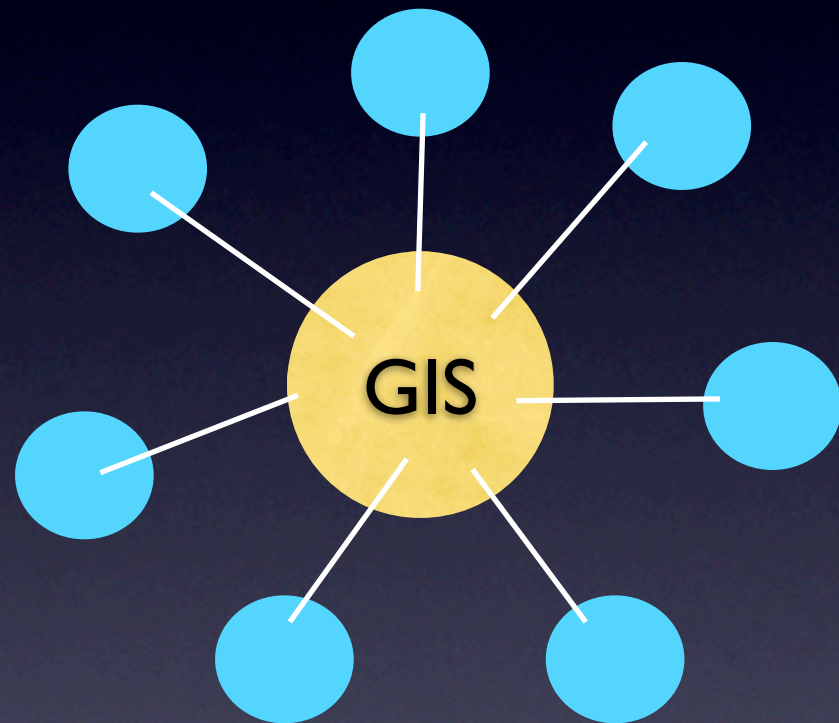


# GIS = Center





# GIS = Center





# Contact

- Adena Schutzberg
- twitter: adenas
- All Points Blog - apb.directionsmag.com
- Directions Magazine -  
www.directionsmag.com
- Geography 860 - https://www.e-  
education.psu.edu/geog860/home.html